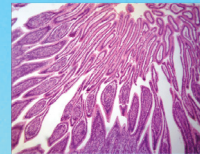
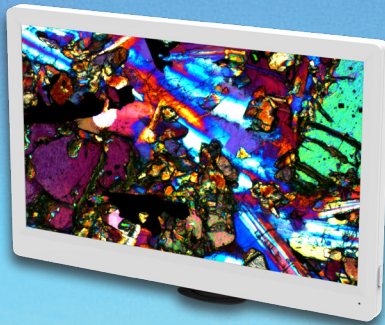




LABOMED, INC.



LC-15 LCD HDMI Digital Camera (11.6", 5.0MP, 15fps)

LC-15 LCD HDMI Digital Camera (11.6", 5.0MP, 15fps) is a brand new high performance and highly cost-effective, super reliable HD LCD camera which combines an full HD camera and a retina HD LCD screen. With the built-in software, the **LC-15 LCD HDMI Digital Camera (11.6", 5.0MP, 15fps)** can be controlled by a mouse to take pictures, take videos and save to SD card.

APPLICATION

LC-15 LCD HDMI Digital Camera (11.6", 5.0MP, 15fps) is specifically developed for different microscopy applications. It can be widely used in medical diagnosis, industrial production and inspection, laboratory research and related microscopy field for image, video capture and analysis. It is mainly used for following areas:

- Biological Teaching Digital Imaging
- Live Cell Imaging
- Surgical Microscopic Imaging



LABOMED, INC.

- Pathology
- Cytology
- Defect Analysis
- Semiconductor Inspection
- Navigation for Processed Imaging
- Industrial Optical HD Digital Imaging
- Astronomical Observation



FEATURES

1. Control camera with mouse from USB port, no shaking.
2. 11.6" retina HD LCD Screen, high definition and high quality color reproduction.
3. 5.0MP still image capture and 1080P Video Recording.
4. Save image and video to SD card.
5. Also can be connected to PC and take picture, take video, do measurement and analyze images.
6. Standard C-mount Interface for different microscopes.

SPECIFICATION

HDMI Camera	Image Sensor	CMOS, Aptina MT9P031
	Sensor Size	1/2.5"
	Video Resolution	1920 × 1080
	Image Resolution	2592 × 1944
	Frame Rate	1920 × 1080 15fps via USB2.0 1920 × 1080 15fps via HDMI
	Data Record	SD Card (4G)
	Video Record	1080p 15fps @ SD Card 1080p 15fps @ PC
	Scan Mode	Progressive
	Electronic Shutter	Electronic Rolling Shutter
	A/D conversion	8 bit
	Color Depth	24bit



LABOMED, INC.

Sensitivity	510mV
Dynamic Range	60dB
S/N ratio	40.5dB
Exposure time	0.001 sec ~ 10.0 sec
Exposure	Auto/Manual
White balance	Auto
Settings	Gain, Gamma, Saturation, Contrast
Built- in software	Cloud 1.0 version
PC software	TCapture
Output model 1	USB2.0
Output model 2	HDMI
System Compatible	Windows XP/Vista/Win 7/Win 8 (32 and 64-bit), MAC OSX
Optical port	C- Mount
Power Supply	DC 12V /2A
Operational Temperature	0-60°C
Humidity	45%-85%
Storage Temperature	-20-70°C

Retina Screen	Screen Size	11.6 inch
	Aspect Ratio	16:9
	Display Resolution	1920 × 1080
	Display Type	IPS-Pro
	Brightness	320cd/m2
	Static Contrast Ratio	1000:1
	Input	1*HDMI Port
	Power Supply	DC 12V /2A External Adapter
	Dimension	282mm × 180.5mm × 15.3mm
	Net Weight	600g



LABOMED, INC.

SAMPLE IMAGES

